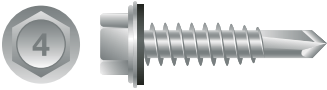


**Submittal:** SD4SWH1212BS



**STRONG-POINT<sup>®</sup> 410 STAINLESS STEEL UNSLOTTED INDENTED HEX WASHER HEAD, PASSIVATED & WAXED W/BONDED NEO-EPDM WASHER**

Size	Part#	Pt.	Case Qty.	Description
12-14 x 3/4	4HA1212	3	3M	Unslotted Indented Hex Washer Head, Passivated & Waxed w/Bonded NEO-EPDM Washer
12-14 x 1	4HA1216	3	3M	Unslotted Indented Hex Washer Head, Passivated & Waxed w/Bonded NEO-EPDM Washer
12-14 x 1-1/4	4HA1220	3	2.5M	Unslotted Indented Hex Washer Head, Passivated & Waxed w/Bonded NEO-EPDM Washer
12-14 x 1-1/2	4HA1224	3	2.5M	Unslotted Indented Hex Washer Head, Passivated & Waxed w/Bonded NEO-EPDM Washer
12-14 x 2	4HA1232	3	1.5M	Unslotted Indented Hex Washer Head, Passivated & Waxed w/Bonded NEO-EPDM Washer
12-14 x 2-1/2	4HA1240	3	1M	Unslotted Indented Hex Washer Head, Passivated & Waxed w/Bonded NEO-EPDM Washer

Application: Attaches metal to metal.  
Drill Capacity (in.): .035 - .210

- Specifications:
- Manufactured to SAE<sup>1</sup> J78 for dimensional specifications
  - Meets F.I.P.<sup>2</sup>-1000.7 for torsional strength and drill speed
  - Medium degree of corrosion resistance

Installation: A 5/16" hex nut setter or 5/16" drive socket with torque limiting nose piece set at a maximum of 2000 RPM drive speed recommended. Do not over torque as it can cause the head to snap or stripping of the threads. Installed fasteners must penetrate a minimum of three full threads beyond the metal structure.

Pullout Values (Avg. Lbs.)									
Fastener		Steel Gauge							
Size	Pt.	22	20	18	16	14	12	1/8	3/16
12-14	3	283	333	537	737	1034	1585	2349	2911

Shear Values (Avg. Lbs.)									
Fastener		Steel Gauge (Lapped)							
Size	Pt.	22	20	18	16	14	12	1/8	3/16
12-14	3		749	1320	1574	1914	1929		

The values listed are averages achieved under laboratory conditions and imply no warranty. Appropriate safety factors should be applied to these values for design purposes.

<sup>1</sup>(Society of Automotive Engineers)

<sup>2</sup>(Fastener Inspection Products)